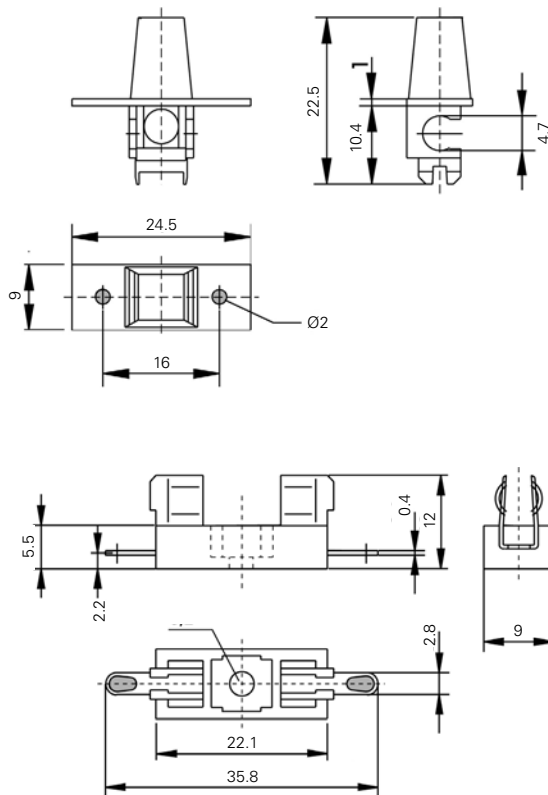


## 647 Series Molded Fuse Holder For 5×20mm Fuses



### Dimensions



### Product Characteristics

<b>Compatible Fuse Sizes</b>	5×20mm
<b>Materials</b>	<b>Holder:</b> Black Thermoplastic, UL94 V-0 Polyamide PA 6.6
	<b>Adapter:</b> Polyester PBT, UL94 V-0
	<b>Metal Parts:</b> Tin plated copper alloy
<b>Electrical Data (23°C)</b>	<b>Rated Voltage:</b> 250V
	<b>Max. Current/Power:</b> 6.3A/2.5W 6.3A/1.6W (with No. 640)
<b>Mounting</b>	Ø 3mm screw hole Hand adapter can be optionally used with Holder No. 646 and 647
<b>Terminals</b>	Solderable or 2.8mm quick connect - fits 0.5mm tabs
<b>Minimum Cross Section</b>	Conducting path - 2.5mm <sup>2</sup>
<b>Unit Weight</b>	1.7g (Holder), 1.0g (Adapter)

### Ordering Information

Ordering PN	Description
<b>64700001003</b>	5X20MM Fuse Block Cable Type
<b>64000001003</b>	Adapter Black
<b>64000001403</b>	Adapter Brown
<b>64000001503</b>	Adapter White
<b>64000001603</b>	Adapter Yellow
<b>64000001703</b>	Adapter Green
<b>64000001903</b>	Adapter Blue

### Additional Information



Datasheet



Resources



Samples

**Disclaimer Notice** - Information furnished is believed to be accurate and reliable. However, users should independently evaluate the suitability of and test each product selected for their own applications. Littelfuse products are not designed for, and may not be used in, all applications. Read complete Disclaimer Notice at: [www.littelfuse.com/disclaimer-electronics](http://www.littelfuse.com/disclaimer-electronics).